



# BOURBON ARETHUSE- MPSV

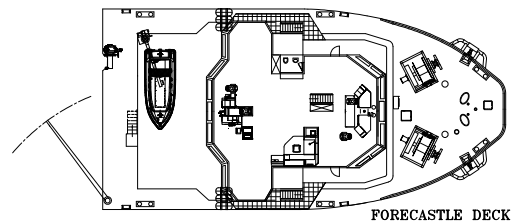
Multi-purpose platform supply vessel DP2  
4 points mooring  
1,200 t deadweight



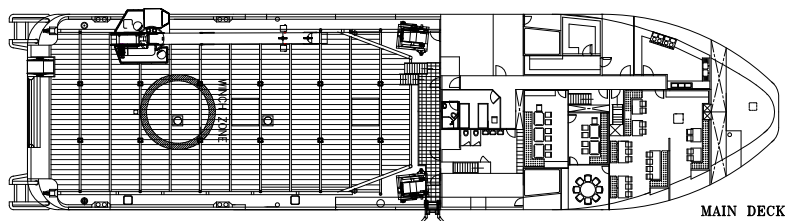
**BOURBON ARETHUSE** is a Conan Wu designed multi-purpose platform supply vessel is designed to carry out various services for the offshore industry.

The vessel is designed for operations to fulfill the following duties.

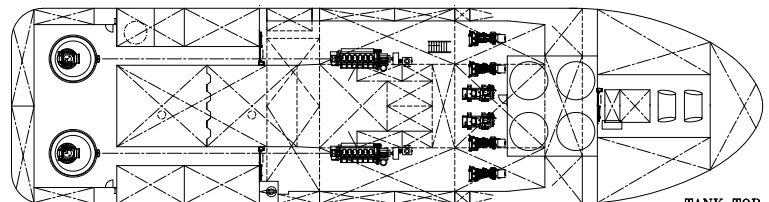
- Light subsea installation up to 2,300m.
- ROV operations.
- Maintenance of SPMs buoys.
- Survey operations.
- Platform maintenance support in DP or 4 points mooring.



FORECASTLE DECK



MAIN DECK



TANK TOP

MULTI PURPOSE SUPPLY VESSEL

## REGISTRATION

Vessel Name: **BOURBON ARETHUSE**

Builder: **BHARATI SHIPYARD— India—2008**

Type: **MULTI PURPOSE SUPPORT VESSEL DP2**

Class: **Class 1 Hull, Mach, Supply vessel, Unrestricted**

**navigation, AUT-UMS, DynPos AM/AT, Fire fighting ship I water spray, Special service/stand by rescue/offshore**

Owner: **Bourbon Offshore**

Flag: **St Vincent**

Updated: 03-03-2009





### ■ MAIN PARTICULARS

#### DIMENSIONS

Length overall: .....60.00 m  
 Breadth moulded: .....15.60 m  
 Depth: .....6.00 m  
 Draft: .....4.50 m  
 Deadweight: .....1,200 t  
 Gross tonnage: .....1,600 t  
 Net tonnage: .....590

#### CAPACITIES

Deck area: .....377 m<sup>2</sup> @ 5.0 t/m<sup>2</sup>  
 Deck cargo: .....300 t @ 0.9 m above deck  
 Fuel oil: .....643 m<sup>3</sup>  
 Drill water: .....151 m<sup>3</sup>  
 Fresh water: .....434 m<sup>3</sup>  
 Dispersant: .....17 m<sup>3</sup>  
 Foam: .....22 m<sup>3</sup>

#### DELIVERY RATES

Fuel oil: .....3" Weco.....120 m<sup>3</sup>/h at x 7 bars  
 Drill water: .....4" Weco.....120 m<sup>3</sup>/h at x 7 bars  
 Fresh water: .....3" weco.....120 m<sup>3</sup>/h at x 7 bars  
 2 air compressors: .....20 m<sup>3</sup>/h at x 5.6 bars

#### ACCOMMODATIONS

Accommodations for: .....44 pers.  
 Single cabins: .....6  
 Single /2 man cabins: .....2  
 2 man cabins: .....13  
 4 man cabins: .....2  
 Office: .....2  
 Hospital: .....1  
 Mess / Day rooms: .....1 Mess - 2 Day rooms  
 Laundry: .....1  
 Galley: .....1

### ■ MACHINERY / PERFORMANCE

#### PROPULSION - MACHINERY

Main engines: .....2 x 1,200 kW  
 Propellers: .....2 Type CPP azimuth stern drive  
 Bow thrusters: .....2 x 400 kW Tunnel  
 Shaft generators: .....2 x 780 kVA  
 Auxiliary generators: .....4 x 375 kVA  
 Emergency generator: .....75 kVA

#### SPEED / CONSUMPTION

Maximum speed (100%): .....11 knots  
 Service speed (80%): .....9 knots

### ■ EQUIPMENT & ELECTRONICS

#### DECK EQUIPMENT

4 PT mooring system: .....4 winches with single drum each.  
 Capacity: 1,200 m wire of 38 mm diameter.  
 Forward mooring winches: 30 t (1st layer) - brake 70 t (1st layer).  
 Stern mooring/lift winches: 24 t (top layer) - brake 70 t (1st layer).  
 Tugger: .....1 x 15 t @ 8 m/min.  
 Capstans: .....2 x 10 t @ 8 m/min.  
 Deck provisions crane: .....1.5 t @ 15 m.  
 Man deck crane (AHC) - 2,300m wire of 30mm diameter.  
 - 24 t @ 10m - 8 t @ 19m (double fall - harbour).  
 - 12 t @ 10m - 6 t @ 19m (single fall - offshore) .  
 - Man riding.

#### SAFETY EQUIPMENT

Fire Fighting (Fifi 1) 2,400 m<sup>3</sup>/h.  
 - Pumps: 2 x 1,500 m<sup>3</sup>/h @ 14 bars each.  
 - Monitors: 2 water monitors 1,200 m<sup>3</sup>/h @ 12 bars.  
 Life saving arrangement: 1 MOB (Rescue boat) with davit.  
 - Life rafts with equipment— Lifebuoys, life Jackets.

#### ELECTRONICS

##### DP: BV DYNAPOS AM/AT R - DP2 system

Converteam DP2 system.  
 2 DGPS Aquarius type 1 & 2.  
 1 x Sonardyne USBL head 8023.  
 1 fan beam.  
 2 anemometers.  
 Motions reference unit TSS: 1 x DMS-05, 1 x RP25.  
 3 gyrocompas TSS Meridian.

#### NAVIGATION

2 radars, 1 autopilot system.  
 2 GPS.  
 1 AIS.

#### COMMUNICATION

5 VHF, 1SSB Duplex.  
 F77, 2 Sat B.  
 Ku Band - 128 Kbit.

#### DECK POWER supply

2 x 350 kW - 440V power supply.  
 1 x 80 kW power supply mid deck.

*All particulars believed to be correct but not guaranteed*