



BOURBON TEGUH

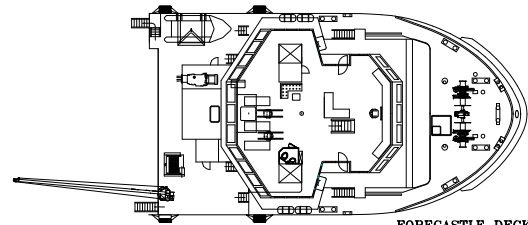
DP 1 Anchor handling tug supply vessel
86 Metric ton bollard pull
150 Metric ton line pull winch



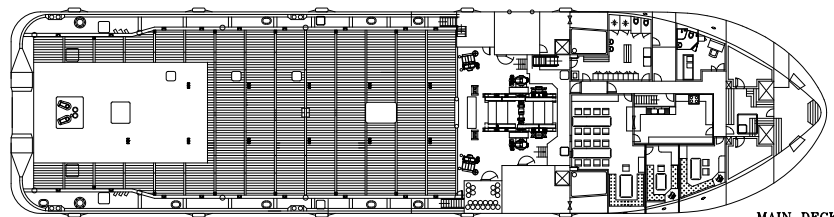
This anchor handling tug supply vessel has been designed by CONAN WU to carry out general services for the offshore industry. It is fitted with a class DP1 system, Fi-Fi I system, and easy to upgrade for standby/service duties.

It is equipped with a waterfall double drum winch with large capacity suitable for towing, anchor handling and offshore terminal operations.

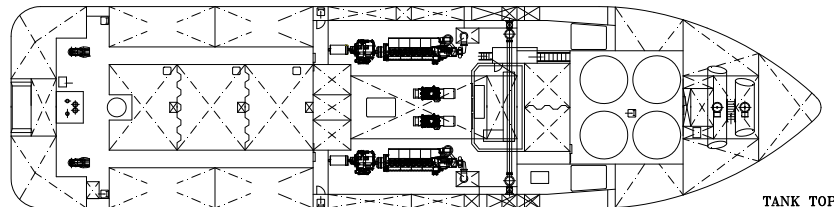
« Photo: BOURBON THERA Sistership of BOURBON TEGUH»



FORECASTLE DECK



MAIN DECK



TANK TOP

ANCHOR HANDLING TUG SUPPLY VESSEL

REGISTRATION

Vessel Name: **BOURBON TEGUH**
Type: **AHTS vessel CONAN WU Design**
Year: **2009** / Flag: **Singapore**
Owner: **Bourbon Offshore**

Builder: **Dayang Shipyard - China.**
Class: **BV. Class 1, Hull, Mach, Tug, Supply Vessel, Unrestricted navigation, Fifi I Water spray, DYNAPOS AM/AT (Class 1), AUT-UMS.**
Optional: **Special Service/Stand by Rescue Vessel.**

Updated: 06-11-2009





MAIN PARTICULARS

DIMENSIONS

Length overall:	64.80 m
Breadth moulded:	16.00 m
Depth:	5.80 m
Draft:	4.90 m
Deadweight:	1,603 t
Bollard pull:	86 t
Gross tonnage:	2,014 t
Net tonnage:	604

CAPACITIES

Deck area:	(33 x 13 m) 420 m2 at 5.0 t/m2
Deck cargo:	800 t
Fuel oil:	607 m3
Drill water:	464 m3
Fresh water:	446 m3
Liquid mud / Brine:	392 m3
Dry bulk/Cement:	170 m3
Chain locker / Brine / Mud:	112 m3
Dispersant:	20 m3
Foam:	18 m3

DELIVERY RATES

Fuel oil:	120 m3/h at 7 bars
Drill water:	120 m3/h at 7 bars
Fresh water:	120 m3/h at 7 bars
Liquid mud:	120 m3/h at 7 bars
Dry Bulk/Cement:	2 x 20 m3/min at 5.6 bars

ACCOMMODATIONS

Accommodations for:	28 pers
Single cabins:	6
2 man cabins:	5
4 man cabins:	3
Hospital:	1
Mess / day rooms, laundry, galley, stores, office	
Fully air conditioned.	

MACHINERY / PERFORMANCE

PROPULSION - MACHINERY

Main engines:	2 x 2,640 kW
Propellers:	2 type CCP
Bow thrusters:	2 x 500 kW
Stern thruster:	500 kW
Shaft generators:	2 x 1,600 kVA
Auxiliary generators:	2 x 440 kVA
Emergency generator:	110 kVA

SPEED / CONSUMPTION

Maximum speed (100%):	30 m3/day at 14 knots
Service speed (80%):	25 m3/day at 12 knots
Economic speed (50%):	15 m3/day at 9 knots

EQUIPMENT & ELECTRONICS

DECK EQUIPMENT

Main winch:	1 Electro-Hydraulic high pressure winch.
	2 Decutchable drums in Waterfall arrangement.
Rated pull:	150 t at 6 m /min
Brake holding load:	225 t
Drum size:	900/2,090 mm x 1,800 mm length
Drum capacity:	1,500 m of 2 1/4
Windlass:	1 combined mooring and windlass winch
Stern roller:	250 mt SWL
Towing pins:	1 pair 200 t SWL
Shark jaws:	2 of 200 t SWL
Tuggers:	2 x 11 t at 25 m/min
Capstans:	2 x 10 t at 15 m/min
Deck provisions crane:	1.7 t at 14 m

SAFETY EQUIPMENT

Fire Fighting (Fifi 1) 2,400m3/h:	2 pumps 1,200 m3/h
	2 monitors of 1,200 m3/h

MOB boat with davit
Life saving arrangement
Standby Rescue Equipment for 150 survivors: (optional)
Stand by rescue equipment.

ELECTRONICS

NAVIGATION

2 radars
1 gyrocompass
1 magnetic compass
1 digital echo-sounder
1 speed log
1 autopilot system
1 GPS

COMMUNICATION

1 radio system compliant with GMDSS A3
1 SSB Duplex DSC
2 INMARSAT C
2 VHF EPIRB
1 INMARSAT F

DYNAMIC POSITIONING SYSTEM

Type: Class DP1
- Sensors and monitoring as per class I requirements.

All particulars believed to be correct but not guaranteed