



# BOURBON HELIOS

DP 2 diesel electric platform support vessels  
for deep water operations  
3,230 t deadweight



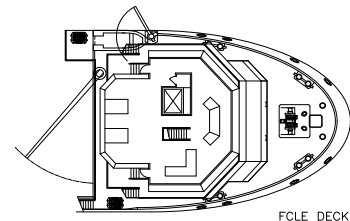
The BOURBON HELIOS, is a GPA 670 PSV designed in conjunction with Guido Perla & Associates of Seattle, Washington. This environmentally friendly diesel electric vessel uses less fuel than conventional direct-drive propulsion vessels and produces far less pollution. The vessel is also classed DP 2.

The GPA 670 design allows for greater tank and delivery capacity to compete with vessel larger than it.

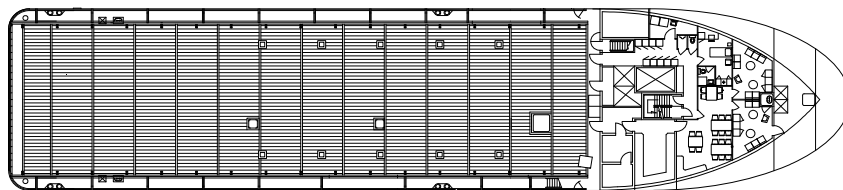
The vessel is designed for world-wide, deep water and shallow water operations to fulfill the following duties:

- Transportation of liquid products, deck cargo and other equipment for drilling and production support.

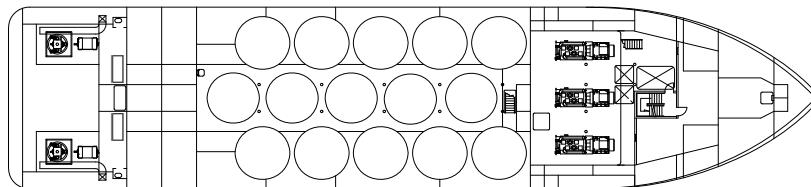
« Photo: «BOURBON HERMES» Sistership of «BOURBON HELIOS».



FCLE DECK



MAIN DECK



MEZZANINE DECK

PLATFORM SUPPLY VESSEL

## REGISTRATION

Vessel Name: **BOURBON HELIOS**

Type: **DP2 PSV, GPA 670**

Year: **2006**

Flag: **French** / Owner: **Bourbon Offshore**

Builder: **Zhejiang (China)**

Class: **BV1+ Hull + MACH Unrestricted Navigation,**

**Supply Vessel oil product, Fire fighting ship 1, Water spray,**

**+ AUT-UMS + DYNPOS AM-AT-R (class 2).**

Updated: 30-06-2009



### MAIN PARTICULARS

#### DIMENSIONS

|                  |        |
|------------------|--------|
| Length overall:  | 73.20m |
| Breadth moulded: | 16.50m |
| Depth:           | 6.80m  |
| Draft:           | 5.63 m |
| Deadweight:      | 3,230t |
| Gross tonnage:   | 2,321  |
| Net tonnage:     | 696    |

#### CAPACITIES

|                    |                                    |
|--------------------|------------------------------------|
| Deck area:         | (50,30 x 13,70) 675 m2 with 5 t/m2 |
| Deck cargo:        | 1,600 t                            |
| Fuel oil:          | 1,117 m3                           |
| Drill water:       | 759 m3                             |
| Fresh water:       | 579 m3                             |
| Liquid mud, Brine: | 1,092 m3                           |
| Base oil:          | 188 m3                             |
| Dry Bulk/Cement:   | 255 m3                             |

#### DELIVERY RATES

|                    |                        |
|--------------------|------------------------|
| Fuel oil:          | 150 m3/h at 9 bars     |
| Drill water:       | 150 m3/h at 9 bars     |
| Fresh water:       | 150 m3/h at 9 bars     |
| Liquid mud, Brine: | 2 x 75 m3/h at 15 bars |
| Base oil:          | 150 m3/h at 9 bars     |
| Dry Bulk/Cement:   | 50 t/h at 6 bars       |

#### ACCOMMODATIONS

|   |         |
|---|---------|
| Accommodations for:                       | 23 pers |
| Single cabins:                            | 5       |
| 2 man cabins:                             | 5       |
| 4 man cabins:                             | 2       |
| Hospital:                                 | 1       |
| Mess / day rooms, laundry, galley, stores |         |
| Fully air conditioned.                    |         |

### MACHINERY / PERFORMANCE

#### PROPULSION - MACHINERY

|                        |                                   |
|------------------------|-----------------------------------|
| Main engines:          | 3 x 1,825 kW                      |
| Propellers:            | Z drive, fixed pitch, 360 degrees |
| Bow thrusters:         | 2 x 746 kW Tunnel                 |
| Auxilliary generators: | 2 x 1,920 kW                      |
| Emergency generator:   | 170 kW                            |

#### SPEED / CONSUMPTION

|                       |          |
|-----------------------|----------|
| Maximum speed (100%): | 13 knots |
|-----------------------|----------|

### EQUIPMENT & ELECTRONICS

#### DYNAMIC POSITIONING SYSTEM

|   |         |
|---|---------|
| Type:   | Class 2 |
| -Sensors and monitoring as per class 2 requirements |         |
| -1 vertical reference unit.                         |         |

#### DECK EQUIPMENT

|                        |             |
|------------------------|-------------|
| Tugger:                | 1 x 10 t    |
| Capstans:              | 2 x 8 t     |
| Deck provisions crane: | 2 t at 10 m |
| Roll reduction System. |             |

#### SAFETY EQUIPMENT

|  |  |
|--|--|
| Fire Fighting (Fifi 1) ( 2 pumps of 1,500 m3/h and 2 monitors) |  |
| Life saving arrangement.                                       |  |
| Stand by rescue equipment.                                     |  |
| Remote control and monitoring of main cargo systems.           |  |

#### ELECTRONICS

##### - NAVIGATION

|                        |
|------------------------|
| 2 radars               |
| 2 gyrocompasses        |
| 1 magnetic compass     |
| 1 digital echo-sounder |
| 1 speed log            |
| 1 autopilot system     |
| 1 GPS ( and 2 DGPS )   |

##### - COMMUNICATION

|  |
|--|
| 1 radio system compliant with GMDSS A3 |
| 1 Inmarsat F 77                        |
| 1 iridium                              |

*All particulars believed to be correct but not guaranteed*