



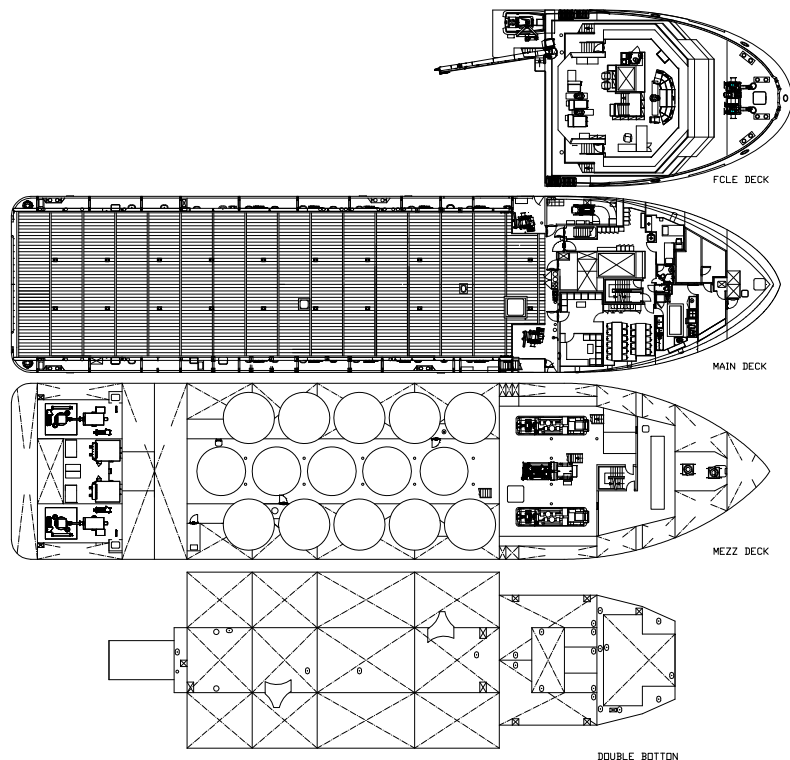
# BOURBON HERALD

DP 2 diesel electric platform support vessel  
for deep water operations  
2,890 t deadweight



The BOURBON HERALD, a GPA 670 MkII ROV design was designed in conjunction with Guido Perla & Associates of Seattle, Washington. This environmentally friendly diesel electric vessel uses less fuel than conventional direct-drive propulsion vessels and produces far less pollution. The vessel is also classed DP2.

The vessel is equipped with a twin ROV power supply hubs. Additionally, the vessel has full platform supply capabilities due to tremendous liquid product and deck capacity. These features enable the vessel to perform the following duties:  
Light subsea intervention work  
ROV operations  
Transportation of liquid products, deck cargo and other equipment for drilling and production support.



PLATFORM SUPPLY VESSEL

## REGISTRATION

Vessel Name: **BOURBON HERALD**  
Type: **DP2 PSV, GPA 670 MkII ROV**  
Year: **2008**  
Owner: **Bourbon Offshore**

Builder: **Zhejiang (China)**  
Class: **Special purpose vessel BV I + Hull + MACH, Unrestricted Navigation, Supply Vessel/oil product, Fire Fighting 1, Water spray, + AUT-UMS, + DYNPOS-AM-AT-R.**  
Flag: **Luxembourg**

Updated: 03-03-2009





### MAIN PARTICULARS

#### DIMENSIONS

Length overall:.....73.20 m  
 Breadth moulded:.....16.50 m  
 Depth:.....6.80 m  
 Design draft:.....5.30 m  
 Deadweight (at 5.30m draft):.....2,890 t  
 Gross tonnage:.....2,537  
 Net tonnage:.....761

#### CAPACITIES

Deck area:.....(49,25 x 13,70) 675 m<sup>2</sup> @ 5 t/m<sup>2</sup>  
 Deck cargo:.....1,500 t  
 Fuel oil: (permanent tanks: 965 m<sup>3</sup>).....(maxi) 2,048 m<sup>3</sup>  
 Ballast/Drill water:.....(maxi) 1,882 m<sup>3</sup>  
 Fresh water:.....450 m<sup>3</sup>  
 Liquid product: (mud/brine/base oil/drill water).....1,083 m<sup>3</sup>  
 Dry bulk/Cement (in 4 tanks):.....255 m<sup>3</sup>  
 Base oil:.....198 m<sup>3</sup>

#### DELIVERY RATES

Fuel oil:.....150 m<sup>3</sup>/h at 9 bars  
 Ballast/Drill water:.....150 m<sup>3</sup>/h at 9 bars  
 Fresh water:.....150 m<sup>3</sup>/h at 9 bars  
 Liquid product:.....2 x 75 m<sup>3</sup>/h at 15 bars  
 Base oil:.....150 m<sup>3</sup>/h at 9 bars  
 Dry Bulk/Cement:.....50 t/h at 6 bars

#### ACCOMMODATIONS

Accommodations for:.....40 pers  
 Single cabins:.....6  
 2 man cabins:.....11  
 4 man cabins:.....3  
 Hospital:.....1  
 Mess, day rooms, changing room, laundry, galley, freezer, cooler,  
 pantry, stores, deck lockers.  
 Fully air conditioned.

### MACHINERY / PERFORMANCE

#### DIESEL ELECTRIC PROPULSION - MACHINERY

Main engines:.....3 x 1,825 kW  
 Propellers:.....2 x Z drive, fixed pitch, 360 degrees  
 Bow thrusters:.....2 x 746 kW Tunnel  
 Main generators:.....3 x 1,920 kW  
 Emergency/harbour generator:.....1x 250 kW

#### SPEED / CONSUMPTION

Maximum speed (100%):.....13 knots

### EQUIPMENT & ELECTRONICS

#### DYNAMIC POSITIONING SYSTEM

Type:.....Class 2  
 - Sensors and monitoring as per class 2 requirements.  
 - 2 vertical reference units.

#### DECK EQUIPMENT

Tugger:.....2 x 10 t  
 Capstans:.....2 x 8 t  
 Deck provisions crane:.....2 mt @ 16 m  
 Roll reduction System.  
 Main deck prestructured for:  
 - Offshore crane (9 mt @18.5m) foundation on starboard  
 and one offshore crane power supply (440 V 1,250 Amp).  
 - A-frame (150 tons) foundation.  
 - Central winch (150 tons) foundation.  
 - 2 HIPAP compartments (fitted on portside only with gate valve  
 diam. 500 mm).

#### Vessel equipped for ROV operations:

- ROV's foundation (x2).

#### SAFETY EQUIPMENT

Fire Fighting (Fifi 1) ( 2 pumps of 1,500 m<sup>3</sup>/h and 2 monitors)  
 Life saving arrangement.

#### ELECTRONICS

##### - NAVIGATION

2 radars  
 3 gyrocompasses  
 1 magnetic compass  
 1 digital echo-sounder  
 1 speed log  
 1 autopilot system  
 1 GPS ( and 2 DGPS )

##### - COMMUNICATION

1 radio system  
 compliant with GMDSS A3  
 1 Inmarsat F 77  
 1 iridium  
 V Sat (IP phone available)

*All particulars believed to be correct but not guaranteed*